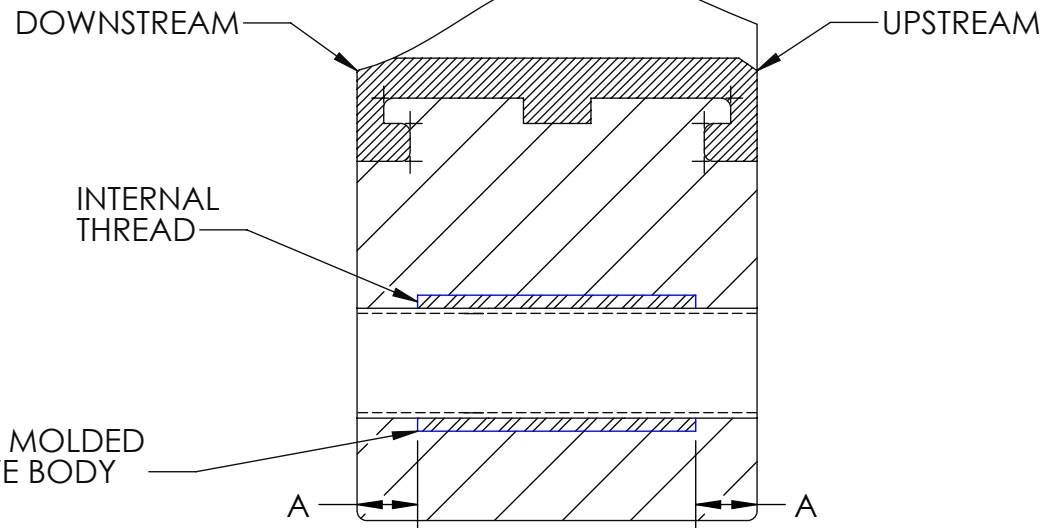
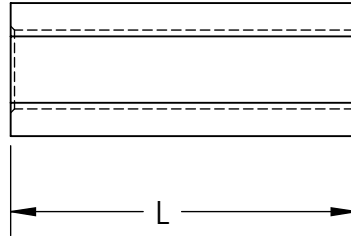
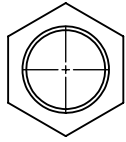


REV	DATE	DESCRIPTION	BY	APP'D
A	6/27/11	FIRST ISSUE	JH	DH

3"-12"
T-57IL LUG



CROSS SECTION OF VALVE BODY

VALVE SIZE	T	L	A
3	5/8-11 UNC	1.370	.220
4	5/8-11 UNC	1.370	.410
6	3/4-10 UNC	2.150	.325
8	3/4-10 UNC	2.150	.640
10	7/8-9 UNC	3.140	.635
12	7/8-9 UNC	3.140	.970

NOTES:
1. DIMENSION "A" MUST BE FACTORED IN WHEN CALCULATING BOLT LENGTHS.

UNLESS OTHERWISE SPECIFIED DIMENSIONS ARE IN INCHES MACHINING TOLERANCES: 2 PL DECIMALS ± .01 3 PL DECIMALS ± .005 ANGULAR ± 1/2° FRACTIONAL ± 1/64 FABRICATION TOLERANCES: 1/2" - 8" ± 1/4 10" AND UP ± 1/2 ANGULAR ± 1.0°	THIS DRAWING AND ALL INFORMATION HEREON IS THE PROPERTY OF ASAHI/AMERICA. ANY COPYING, REPRODUCTION OR UNAUTHORIZED USE IS FORBIDDEN WITHOUT WRITTEN CONSENT.		ASAHI/AMERICA ISO 9001 CERTIFIED 35 GREEN STREET, P.O. BOX 653, MALDEN, MA.						
	DR	J. HUGHES	DATE	6/27/11					
	APPD	D. HURLEY	DATE	6/27/11	3" THRU 12" INTERNAL THREAD DEPTH T57IL				
	MATERIAL	SS	PRODUCT	BF LUGS	SIZE	A	DWG. NO.	M02BF4948	REV
FINISH	125 μ"	WO#/CO#		SCALE	SCALE 1:2		SHEET 1 OF 1		