

DRY-MATE™ DRY-DISCONNECTS





DRY-MATE™ SEALS TIGHT, MINIMIZING
AND KEEPING COSTLY, POTENTIALLY

316 STAINLESS STEEL DRY-MATE

STAINLESS STEEL FEATURES

- 316 heavy duty stainless steel construction
- Size options: 1" FP, 1½" FP, 2" & 2" FP
- FKM (Viton® type), EPDM or Kalrez® face seals
- PTFE ball seats
- 100 PSI maximum operating pressure (1" FP, 1½" FP, 2")
- 300 PSI maximum operating pressure (2" FP)
- 300°F maximum operating temperature
- Available in manifold flange connections
- Spillage: 1" FP & 1½" FP = 1 mL, 2" = 3 mL, 2" FP = 3 mL



NOT YOUR TYPICAL SPILLAGE




99% SPILLAGE REDUCTION

- Reduction of typical spillage using standard 2" valve with cam lock connection vs. Dry-Mate
- 8.45 oz. (250 mL) vs. 0.1 oz. (3 mL) spillage
- At five disconnections per day, this is **over 118 gallons (450 liters) saved per year**; enough to fill the gas tanks of eight mid-size automobiles

C O N N E C T W I T H

DRY-MATE™ OFFERS A VARIETY OF CHEMICAL RESISTANCE, SIZING, AND DURABILITY OPTIONS THAT SUPPORT YOUR BUDGET

DRY-MATE MODEL CHART

		DRY-MATE MODELS				
		1" FULL PORT	1½" FULL PORT	2" STANDARD PORT	2" FULL PORT	3" FULL PORT
DRY-MATE OPTIONS	POLYPROPYLENE 	X	✓	✓	✓	✓
	STAINLESS STEEL 	✓	✓	✓	✓	X

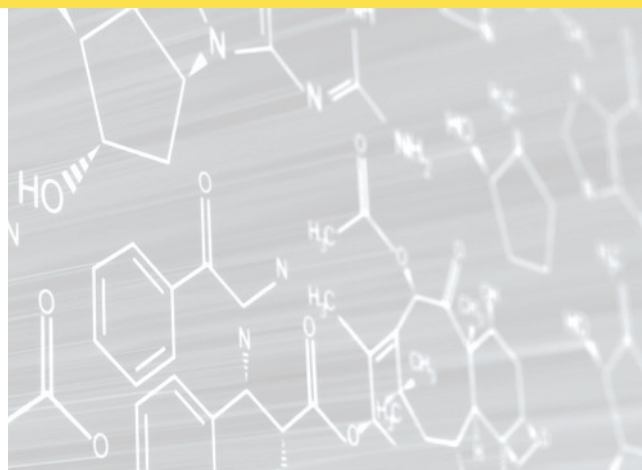
CHEMICAL RESISTANCE CHART



SELECT PROPER VALVE MATERIAL

To view a full listing of our Chemical Resistance Chart, scan this QR code or visit:

BanjoCorp.com/ChemicalResistanceChart



BANJO CORPORATION

A Unit of IDEX Corporation
150 Banjo Drive
Crawfordsville, IN 47933 U.S.A.
Telephone: (765) 362-7367
Fax: (765) 362-0744
banjocorp.com

To learn more about our Dry-Disconnect product line, scan this QR code or visit:

BanjoCorp.com/DryDisconnects

