



International polymer solutions

PTFE Stopcocks

Stopcock Valves are precision machined devices that function in much the same way as a ball valve. When the handle points in the direction of flow, the valve is fully open; when the handle points perpendicular to the direction of flow, the valve is fully closed; and at the 45° position the valve is halfway open and thereby has a metering effect on the media flow.

The IPS Stopcock features an all PTFE wetted surface design. The design is ideally suited for harsh chemical and corrosive media and environments. Polytetrafluoroethylene (PTFE), commonly known by its popular E.I. DuPont trade name TEFLON®, is also well suited to clean room and deionized water applications.

The body, stem and ports are constructed from PTFE. For standard applications, external non wetted components are constructed from Polypropylene. All configurations are optionally available as Panel Mounted and/or High Ambient Temperature models.



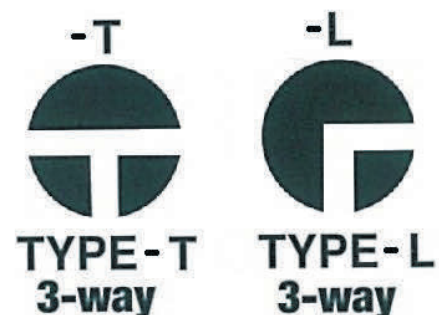
Call IPS for:

- Metric Tube End options
- Male Pipe End options
- Sanitary Connection options

Stopcock Specifications

Media Pressure	60 psi
Media temperature	110° C / 230° F
Ambient temperature	65° C / 150° F
All Wetted Surfaces	Virgin PTFE

Valve Stem Configuration



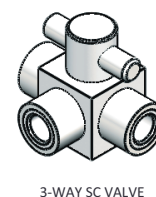
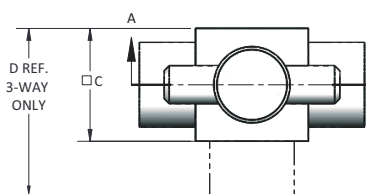
BECO
manufacturing

TEQCOM

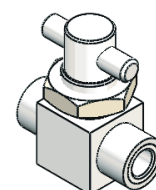
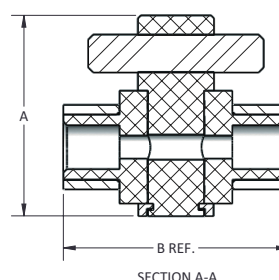
Stopcock Valve: ORDERING FORMAT

- 4-Way Stopcock Valves are available. Please call IPS to properly configure your selection.
- The valve flow orifice is governed by your port end connections (FNPT, Tube or Flared) unless requested otherwise. Please call IPS to configure a restrictive Valve Stem Orifice.
- Maximum torque to turn/actuate stop cock approximately 25 in-lbs. Torque varies based on valve size and other factors.

Port Size	Port Type	Orifice	Body Style	Part No.
1/8"	FNPT	0.11	2-WAY	SC-400
			3-WAY	SC-401
	TUBE	0.09	2-WAY	SC-403
			3-WAY	SC-404
1/4"	FNPT	0.23	2-WAY	SC-500
			3-WAY	SC-501
	TUBE	0.19	2-WAY	SC-503
			3-WAY	SC-504
	FLARE	0.13	2-WAY	SC-506
			3-WAY	SC-507
3/8"	FNPT	0.28	2-WAY	SC-600
			3-WAY	SC-601
	TUBE	0.27	2-WAY	SC-609
			3-WAY	SC-610
	FLARE	0.25	2-WAY	SC-612
			3-WAY	SC-613
1/2"	FNPT	0.44	2-WAY	SC-700
			3-WAY	SC-701
	TUBE	0.39	2-WAY	SC-709
			3-WAY	SC-710
	FLARE	0.38	2-WAY	SC-712
			3-WAY	SC-713
3/4"	FNPT	0.45	2-WAY	SC-800
			3-WAY	SC-801
	TUBE	0.45	2-WAY	SC-809
			3-WAY	SC-810
	FLARE	0.45	2-WAY	SC-812
			3-WAY	SC-813



3-WAY SC VALVE



PANEL MOUNT OPTION

Basic Dimensions

Series	Dim A	Dim B	Dim C	Dim D	PM Hole Size	Max Panel Thickness
SC-400	1.63	1.76	1.00	1.38	0.70	0.30
SC-500	2.00	2.25	1.13	1.69	0.90	0.30
SC-600	2.13	2.62	1.50	2.06	1.03	0.43
SC-700	2.33	3.25	1.88	2.63	1.40	0.43
SC-800	3.25	3.75	2.25	3.00	1.78	0.43

- For Flared Connections add ~3/8" per port.

Options:

- Add "-P" to the end of the Part Number to specify a Panel Mount configuration.
- Add "-HT" to the end of the Part Number for high ambient temperature conditions. This is only required for room temperatures above 140°F. The external non wetted components are changed to PVDF.

PTFE Stopcocks: ORDERING FORMAT

SC - 501 - X - P - HT

Stopcock Part No.

Stem Configuration
(3W Only)

L - Type
T - Type

High Ambient Temp. Option
For Temperatures over 140°F

Panel Mount Option

"A" DIM Increases by About 1"

IPS Product Notes:

1. Please email Customer Service at info@ipolymer.com
2. Call us for special applications. We can manufacture our Valves with special mounting and interface dimensions.
3. Upon request, alternate material selection from those listed will allow for expanding temperature ratings or other performance characteristics.
4. Unauthorized disassembly of this product will void the original factory one-year product warranty. For further details please contact your local Distributor or our factory directly.

141220

international polymer solutions inc. • manufacturer of high purity fluid handling products
5 Studebaker • Irvine, CA 92618 • t: 949.458.3731 • f: 949.458.2787