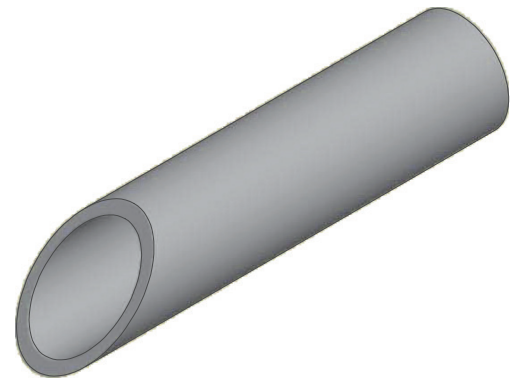


CODE	SDR	ND	S min	Di	Weight (lbs/ft)
27TNIRR2073	7.3	1/2" => 20 mm	0.11	0.57	0.10
27TNIRR2573	7.3	3/4" => 25 mm	0.14	0.71	0.15
27TNIRR329	9	1" => 32 mm	0.14	1.03	0.21
27TNIRR4011	11	1" 1/4 => 40 mm	0.15	1.28	0.27
27TNIRR5011	11	1" 1/2 => 50 mm	0.18	1.61	0.42
27TNIRR6311	11	2" => 63 mm	0.23	2.02	0.67
27TNIRR7511	11	2" 1/2 => 75 mm	0.27	2.42	0.92
27TNIRR9011	11	3" => 90 mm	0.32	2.90	1.34
27TNIRR11011	11	4" => 110 mm	0.39	3.54	1.99
27TNIRR12511	11	5" => 125 mm	0.45	4.02	2.58
27TNIRR16011	11	6" => 160 mm	0.57	5.15	4.18
27TNIRR20011	11	8" => 200 mm	0.72	6.44	6.56
27TNIRR25011	11	10" => 250 mm	0.89	8.06	10.08
27TNIRR31511	11	12" => 315 mm	1.13	10.15	15.93
27TNIRR35511	11	14" => 355 mm	1.27	11.44	20.16
27TNIRR40011	11	16" => 400 mm	1.43	12.89	25.67
27TNIRR45011	11	18" => 450 mm	1.61	14.50	32.32
27TNIRR50011	11	20" => 500 mm	1.79	16.11	39.72
27TNIRR56011	11	22" => 560 mm	2.00	18.05	49.73
27TNIRR63011	11	24" => 630 mm	2.25	20.30	62.83



NIRON



ITEM: **TNIRR**

DESC: NIRON MONO GREY PP-RCT PIPE



DRAWING No:
NI10236

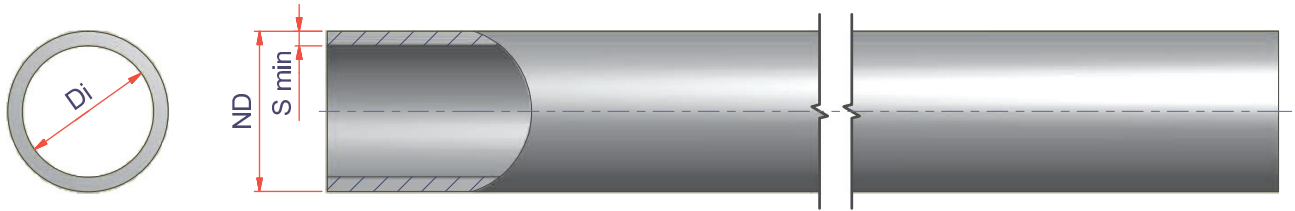
SHEET OF
1 2

REV.
0

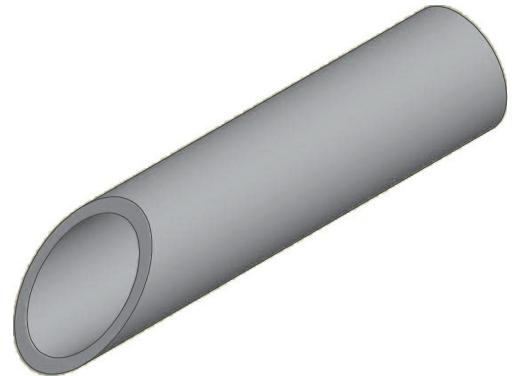
www.nupiamerica.com - info@nupiamerica.com

All dimensions have to be considered in inches with 5% tolerance if not otherwise mentioned excluding values as per standard ASTM F2389

All right reserved - Drawing cannot be reproduced in anyway, failure todo so will entitle nupigeco to legal action. Information on this document are subject to change without notice



CODE	SDR	ND	S min	Di	Weight (lbs/ft)
27TNIRR6317	17	2" => 63 mm	0.15	2.18	0.46
27TNIRR7517	17	2" 1/2 => 75 mm	0.18	2.60	0.65
27TNIRR9017	17	3" => 90 mm	0.21	3.12	0.93
27TNIRR11017	17	4" => 110 mm	0.26	3.81	1.36
27TNIRR12517	17	5" => 125 mm	0.29	4.34	1.75
27TNIRR16017	17	6" => 160 mm	0.37	5.55	2.86
27TNIRR20017	17	8" => 200 mm	0.47	6.94	4.39
27TNIRR25017	17	10" => 250 mm	0.58	8.68	6.91
27TNIRR31517	17	12" => 315 mm	0.74	10.93	10.93
27TNIRR35517	17	14" => 355 mm	0.83	12.31	13.83
27TNIRR40017	17	16" => 400 mm	0.93	13.88	17.50
27TNIRR45017	17	18" => 450 mm	1.05	15.61	22.08
27TNIRR50017	17	20" => 500 mm	1.17	17.35	27.21
27TNIRR56017	17	22" => 560 mm	1.31	19.43	33.96
27TNIRR63017	17	24" => 630 mm	1.47	21.86	42.90



 	ITEM: TNIRR	DESC: NIRON MONO GREY PP-RCT PIPE		DRAWING No: NI10236
	<small>C:\Vaul_Temp\Disegni\Corrente\Tabella\Niron\POLLICI_USA\TNirr_pollici - SDR7_45-11-17 GREY\NI10236.dwg</small>			
www.nupiamerica.com - info@nupiamerica.com		All dimensions have to be considered in inches with 5% tolerance if not otherwise mentioned excluding values as per standard ASTM F2389		