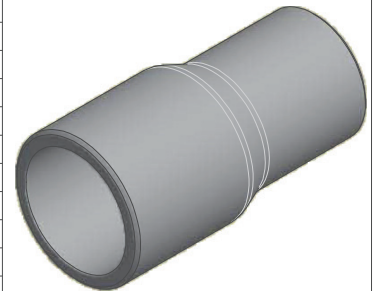


CODE	ND1	S1	ND2	S2	L1	L2	L
27NR754011MM	2" 1/2 => 75 mm	0.27	1" 1/4 => 40 mm	0.15	2.56	1.89	5.63
27NR755011MM	2" 1/2 => 75 mm	0.27	1" 1/2 => 50 mm	0.18	2.56	1.89	5.55
27NR756311MM	2" 1/2 => 75 mm	0.27	2" => 63 mm	0.23	2.80	2.52	5.90
27NR905011MM	3" => 90 mm	0.32	1" 1/2 => 50 mm	0.18	2.87	2.24	5.98
27NR906311MM	3" => 90 mm	0.32	2" => 63 mm	0.23	2.80	2.24	5.90
27NR907511MM	3" => 90 mm	0.32	2" 1/2 => 75 mm	0.27	3.19	2.84	6.89
27NR1106311MM	4" => 110 mm	0.39	2" => 63 mm	0.23	3.35	2.76	6.89
27NR1107511MM	4" => 110 mm	0.39	2" 1/2 => 75 mm	0.27	3.47	2.28	7.28
27NR1109011MM	4" => 110 mm	0.39	3" => 90 mm	0.32	3.07	2.76	6.89
27NR1257511MM	5" => 125 mm	0.45	2" 1/2 => 75 mm	0.27	3.62	2.36	7.84
27NR1259011MM	5" => 125 mm	0.45	3" => 90 mm	0.32	3.39	2.76	7.32
27NR12511011MM	5" => 125 mm	0.45	4" => 110 mm	0.39	3.50	3.03	7.36
27NR16011011MM	6" => 160 mm	0.57	4" => 110 mm	0.39	4.06	3.46	8.46
27NR16012511MM	6" => 160 mm	0.57	5" => 125 mm	0.45	4.02	3.58	8.43
27NR20016011MM	8" => 200 mm	0.72	6" => 160 mm	0.58	4.65	3.98	9.45
27NR25020011MM	10" => 250 mm	0.89	8" => 200 mm	0.72	5.12	4.53	11.02



	ITEM: NR_11MM	DESC: MALE CONCENTRIC REDUCER - LONG SPIGOT SDR 11		DRAWING No:
				NI10143
www.nupiamerica.com - info@nupiamerica.com	<small>C:\Vaut_Temp\Disegni\Corrimal\Tabelle\Niron\POLLICI_USA\Nr_11MM.pdf pol/c - SDR 11\NI10143.dwg</small>			SHEET OF
				1 1
				REV.
				-2

All dimensions have to be considered in inches with 5% tolerance if not otherwise mentioned excluding values as per standard ASTM F2389

All right reserved - Drawing cannot be reproduced in anyway, failure todo so will entitle nupigeco to legal action. Information on this document are subject to change without notice